

S006B Deluxe Multi-function 3D Massage Chair

Product Description:

This product is equipped a set of intelligentized Six-wheel driven 3D massage mechanism which can move forward and backward, upward and downward with muted voice design.

Features:

1. Automatically check the shoulder position and micro adjustment functions: According to the body curve and massage finger pressure points, the mechanism can be adjusted automatically forward and backward so as to make it more humanistic and scientific.
2. Designed with four automatic special massage modes: Easy, comfort, ache cure and recovery from fatigue.
3. Designed with upper body automatic massage function (neck & shoulder auto, back & waist auto)
4. Manual massage functions of the upper body: Overall, partial and fixed points options; Shoulder lift and grasp, kneading, tapping, shiatsu and synchronous knead & tapping five massage methods with five speeds options; Under the state of tapping and shiatsu, there are five width options.
5. Arm air pressure massage function (36 air bags are equipped inside.), three air pressure intensity options.
6. Air pressures massage function of the lower body (47 air bags are equipped inside), three modes and three intensity options.
7. Buttocks and feet vibration massage function with two intensity options.
8. Mp3 music function: Play, stop, previous one, next one, volume up, volume down.
9. Equipped with a jade heater in which 5 Helium-Leon bulbs use 5 jades as infrared emitter, the temp can be adjusted between 40 centigrade~70 centigrade
10. Back heat function: Adopt carbon fiber as heat emitter.
11. Three massage states memorable functions.
12. The length of foot rest could be adjusted to suit different statures.
13. Foot rest and backrest could be ascended and descended freely.
14. Automatically restore function when pressing the power button.
15. LCD touch-screen.
16. Equipped with Mp3 player, earphone and Sound-box.

Specifications:

Color: Black, Red and White (Cream).

Power: 230W

Size: 165*76*78(cm)

N.W.: 110kg

G.W.:120kg

QTY: 25pcs/20ft' 54pcs/40HQ





Shiatsu:

All treatments delivered by the human touch chair (accept for the reflexology foot massage) are based on Shiatsu - traditional Japanese pressure point massage technique, in which finger pressure is applied on particular points (called acupressure points) on the human body in order to stimulate the meridians (routes through which life energy flows).

The advanced rollers of the omega human touch chair simulate accurately masseuse palms, while the advanced technology of the electric Shiatsu massage chair maps and locates the seated user's acupressure points.

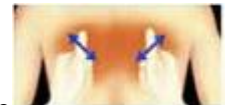
Tapping:

In the tapping technique the rollers of the robotic massage chair move rapidly on the user's back to relieve back aches and sore spots. This technique softens thick fatty layers, while stimulating tensed muscles and nerve tissues in order to achieve complete relaxation.



Pressing:

In the rolling technique, the rollers of the human touch chair move upward and downward, simulating either a pointed or a rotating finger of a skilled masseuse. This is an efficient massage technique that helps both in specific tensed areas and in reducing pressure on the discs by stretching the spine during treatment.



Kneading:

In the kneading technique, four rollers of the electric Shiatsu massage chair move in all directions, simulating a professional Shiatsu therapist. This technique helps to relax stressed muscles, eliminating weariness and rejuvenating the entire body by stimulating blood circulation.



Kneading/ Tapping combo:

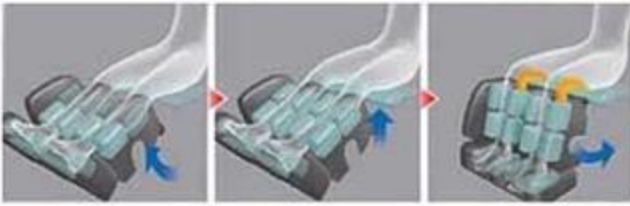
The combination massage of the human touch chair combines tapping movements with dual-action kneading to provide a rejuvenating and pleasurable treatment that integrates the benefits of both techniques.



AMT - Air Massage Technology:

The AMT is an advanced air pressure massage technique in which utilize airbags that are located in the leg rest, seat and back of the human touch chair. These air bags blow up and compress alternately in order to squeeze, hold and release the muscles of the targeted area.

One of the unique features of the air pressure technique in the omega electric Shiatsu massage chair stretches the ankle and knee joints and also the thigh and calve muscles in order to reduce stress and fatigue from the lower body.



Reflexology:

The omega electric Shiatsu massage chair offers a unique feature of Chinese foot therapy, in which pressure is applied on specific points of the foot, to promote relaxation and healing of the entire body.

This method is based on the approach that all parts of the body are connected to the feet through the nervous system and therefore, stimulating particular reflex points in the feet can heal and balance the rest of the body.



Inside the foot wells of the omega human touch chair, there are several strategic nodules that are utilized to stimulate the reflexology pressure points. During treatment, the lower airbags in the foot massage mechanism of the masage chair compress. As a result, the nodules lift the foot arch - activating the pressure points and stretching the foot to relax the whole body and increase blood circulation.



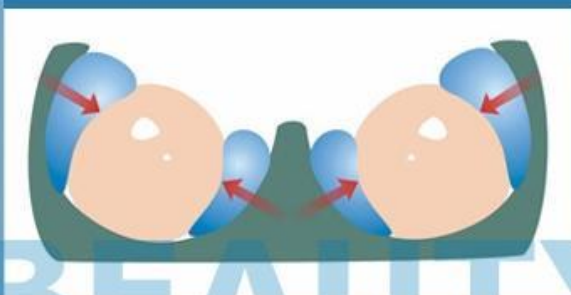
The high massage effect goes directly to the calf and the foot alleviating the leg from fatigue

Wrap & Press Mode

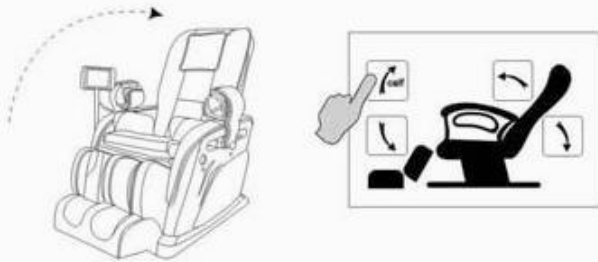
Airbags support wrap around calf with incline. It promotes massage effect and accelerates blood circulation.

Thenar Massage

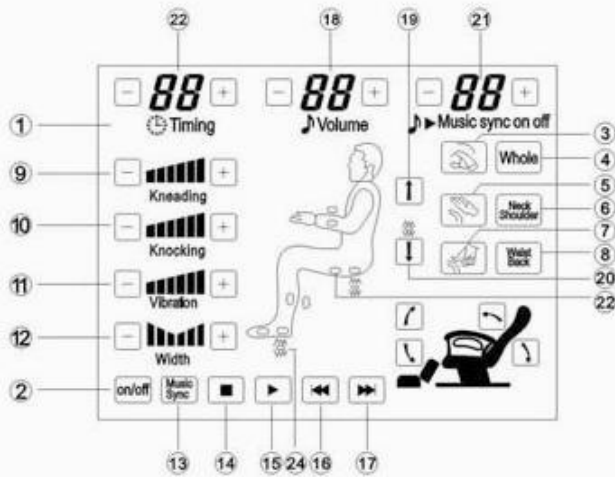
Two air bags in both sides closely grasp the foot, the bottom acupuncture air bag go upward to press the full bottom, and the two air bags in both sides also can be communtatively charged, enable the entire foot to swing, and obtains the full massage



BEAUTY HEALTH

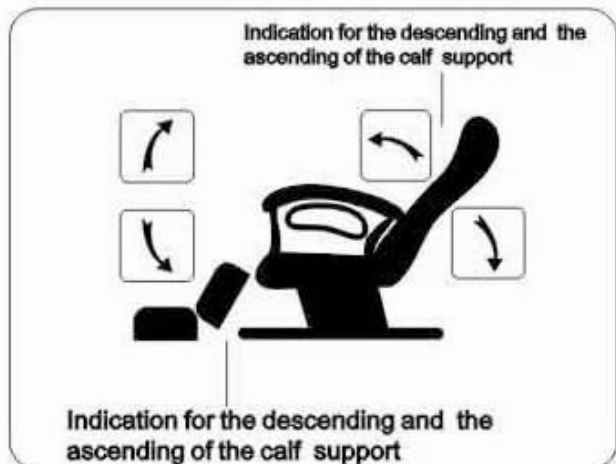
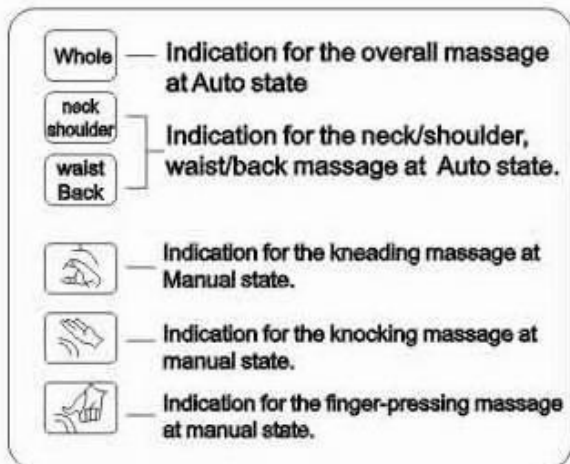
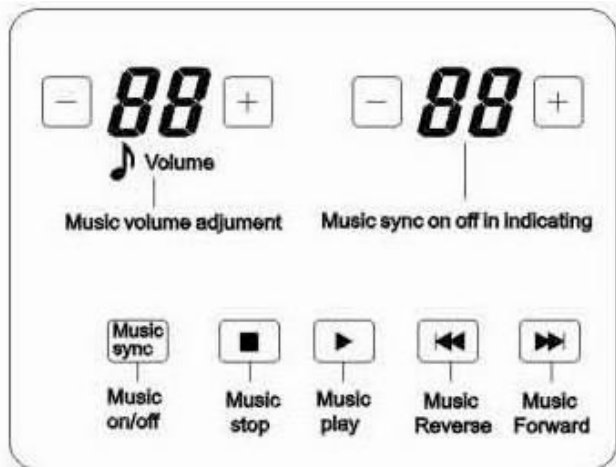
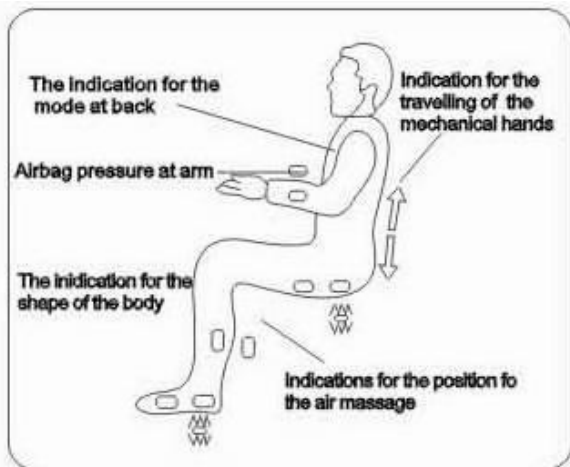


Operational approach for LCD display



Operational approach for LCD display

- ① Touching LCD display
- ② Massage Function On and off key
- ③ Kneading massage at manual state
- ④ Auto mode for overall massage
- ⑤ Knocking massage at manual state
- ⑥ Auto mode for neck & shoulder position massage
- ⑦ Finger-pressing massage at manual state
- ⑧ Auto mode for waist & back position massage
- ⑨ Kneading intensity select I on at manual mode
- ⑩ Knocking intensity selection at manual mode
- ⑪ Vibration intensity selection at manual mode.
- ⑫ Width adjusting key
- ⑬ Music sync on and off key
- ⑭ Music STOP key
- ⑮ Music PLAY key
- ⑯ Music Forwarding key.
- ⑰ Music Reversing key.
- ⑱ Music volume adjusting key.
- ⑲ Upper back locating key at manual state.
- ⑳ Lower back locating key at manual state.
- ㉑ Music sync on and off indication.
- ㉒ Arm air pressure indication.



Name of the external structure

